

Miranda Cuozzo

Portfolio

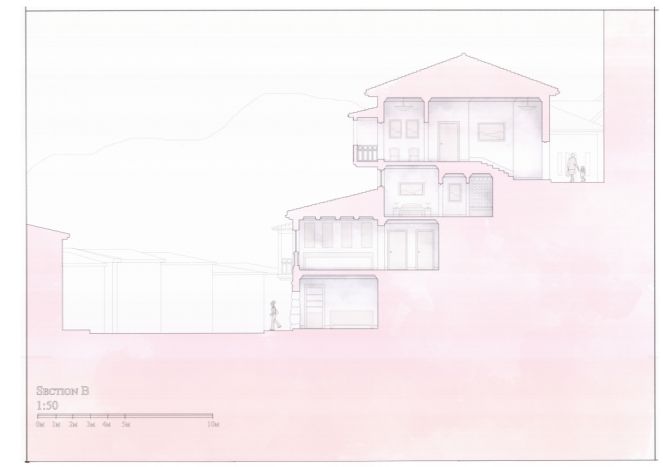




A Mixed-Use Apartment

CUSCO, PERU
FALL 2022

Designed as a part of a larger masterplan project, this mixed-use apartment building features ground level shops, apartments of various sizes, and hotel rooms to function as a part of a proposed diffused hotel. The site's extreme topography posed a significant challenge and was mitigated with setbacks and split floor levels to increase opportunities for light to enter the building. As a fabric building, the facade aims to capture both the Spanish and Incan architectural influences that shape the character of Cusco to fit seamlessly into its context.



The Union Hotel

LOWER SENATE PARK, WASHINGTON D.C.
FALL 2021

The Union Hotel sits in front of a proposed plaza and provides space for both hotel and community functions. In developing this design, I focused on balancing functionality and beauty to create a contextual landmark that blends with rather than dominates its surroundings. To achieve this, I separated the public spaces from the back-of-house and created clear sequences throughout the ground floor. These sequences are visually communicated throughout the elevation using principles of duality and centrality to highlight certain areas and commercial fronts to differentiate the bar and restaurant entrances. To ensure a seamless integration with the local context, the hotel's exterior features relatively minimal ornamentation that fits with the character of the surrounding area, saving its ornate expressions for the major interior spaces.

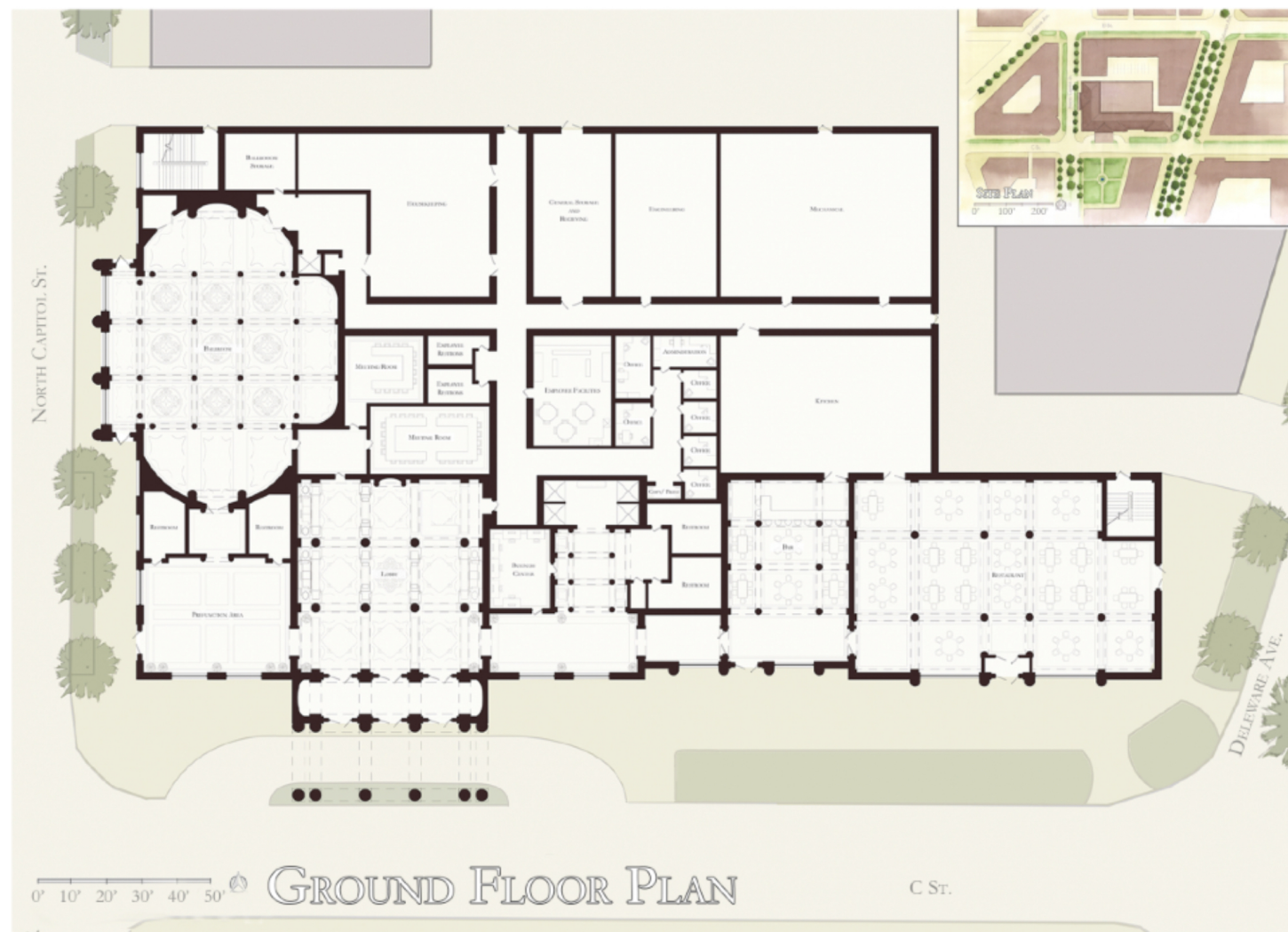


FRONT ELEVATION



SIDE ELEVATION

TRANSVERSE SECTION



GROUND FLOOR PLAN

C St.



A ROMAN PALAZZETTO

PIAZZA DI SAN
SALVATORE IN LAURO

M.I. CUOZZO

UNIVERSITY OF NOTRE DAME

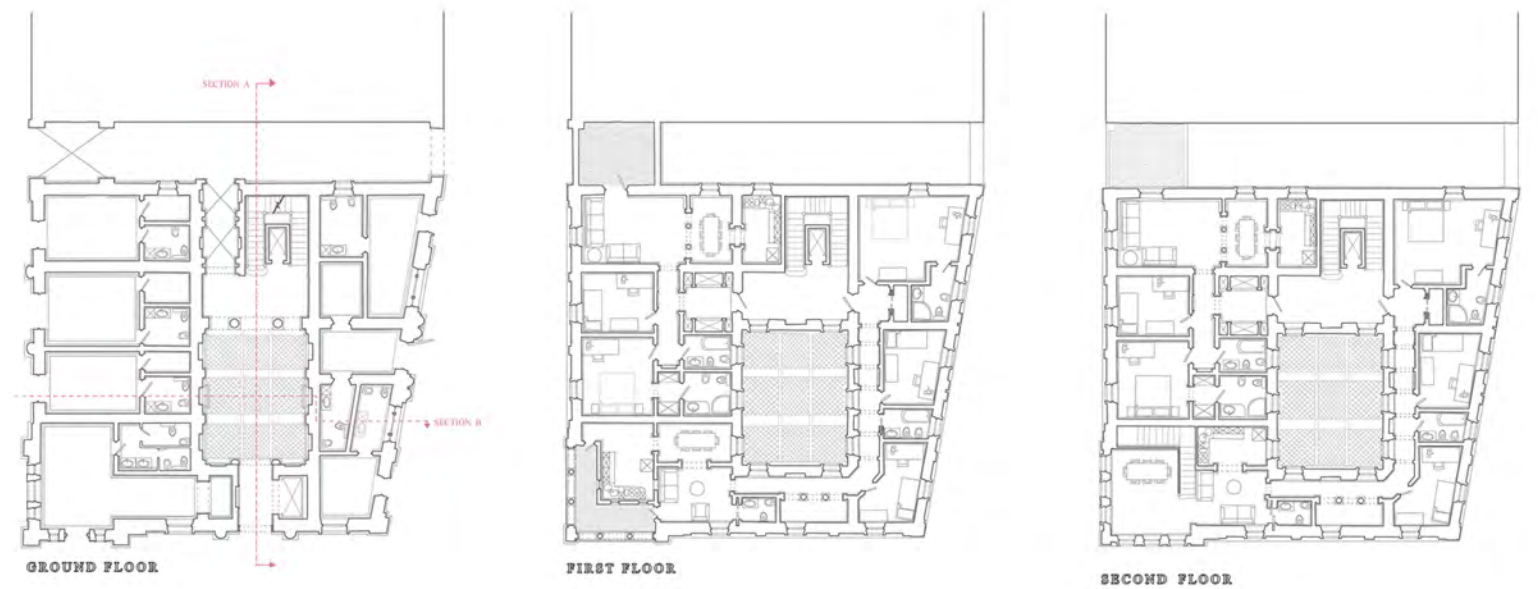
PROF. ANDERS
ARCH 34112

FALL 2020



SECTION A

SECTION B



GROUND FLOOR

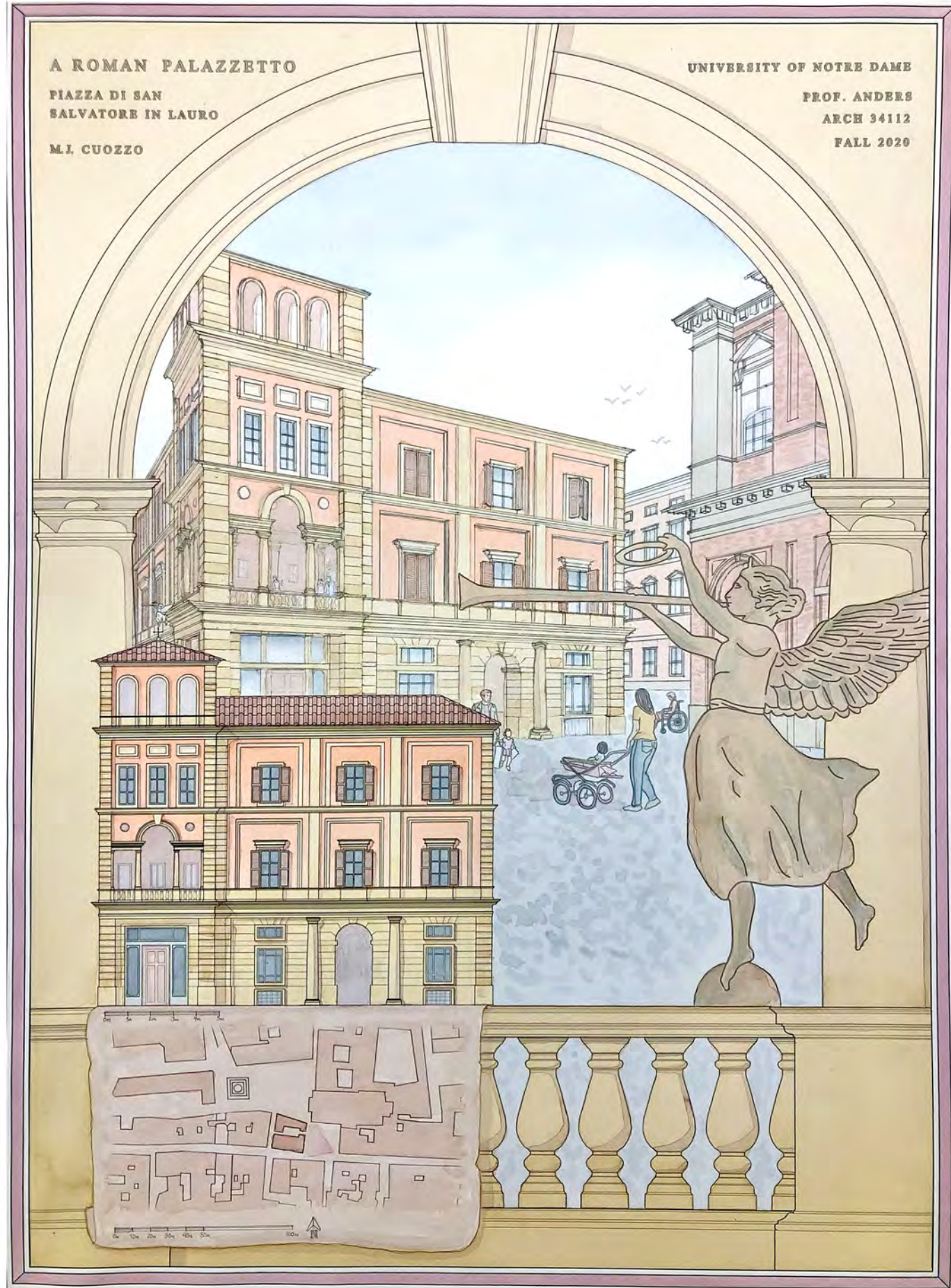
FIRST FLOOR

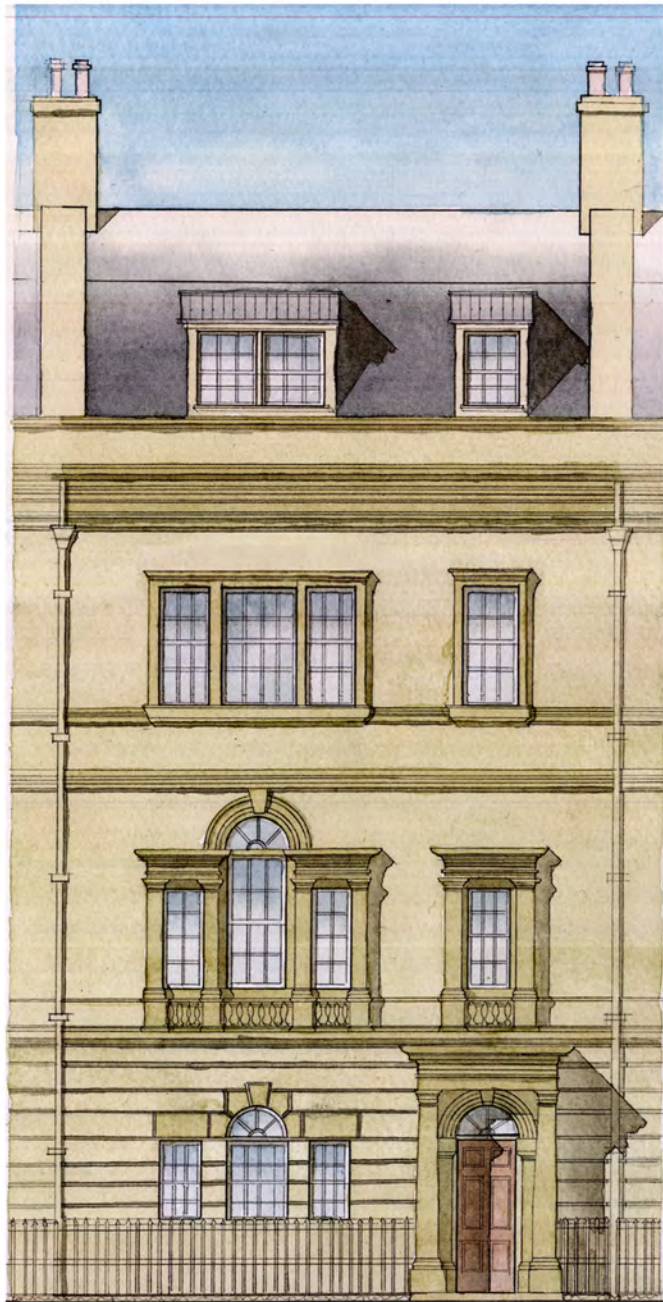
SECOND FLOOR

A Roman Palazzetto

ROME, ITALY
Fall 2020

This Roman palazzetto was designed as a part of an urban intervention in the Piazza di San Salvatore in Lauro. In addition to providing spatial containment for the urban spaces around it, the palazzetto provides four apartment units and space on the ground floor for shops, cafes, and workshops.





FRONT ELEVATION

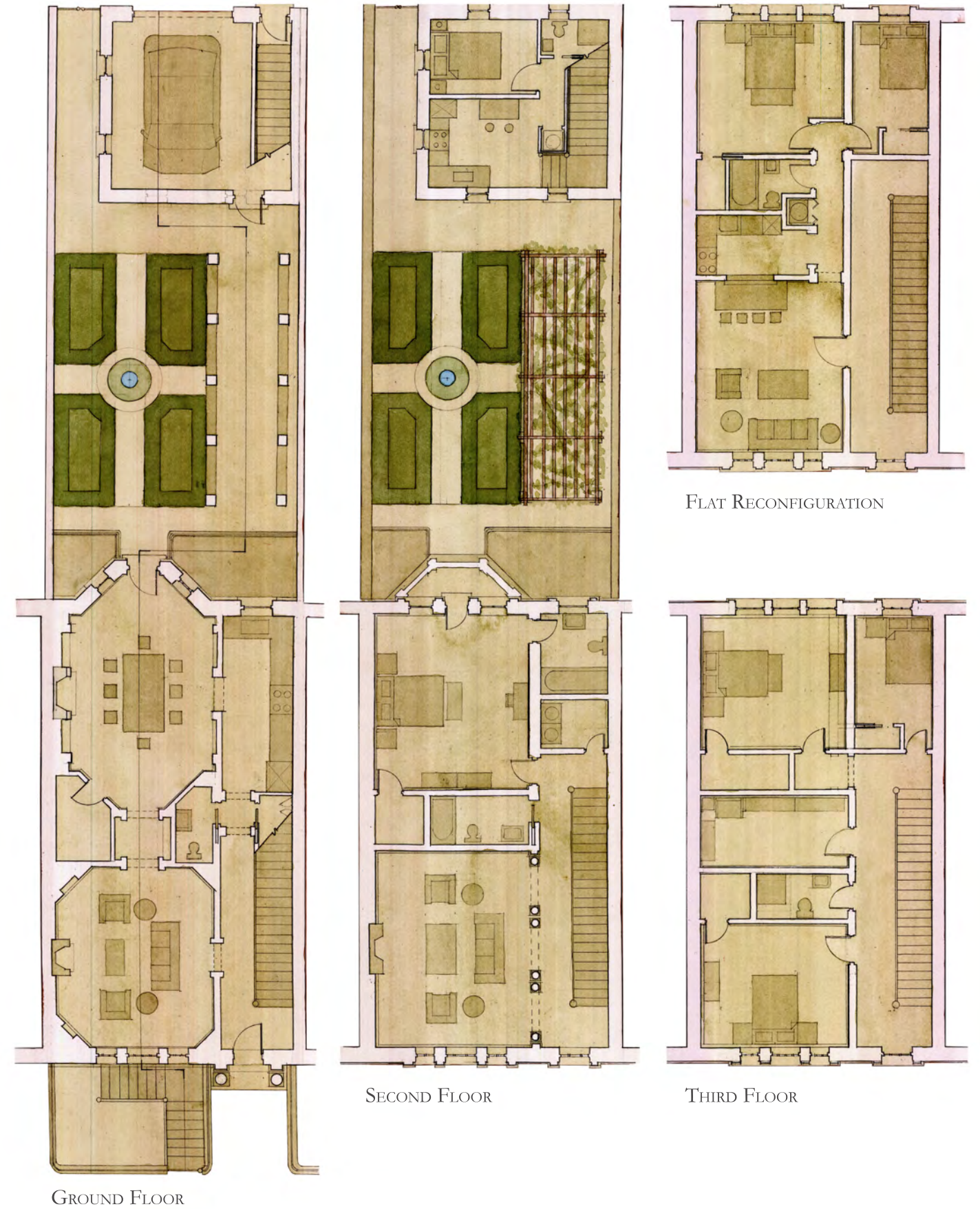


BACK ELEVATION

A Townhouse in Bath

BATH, ENGLAND
Spring 2020

Designed as a part of an urban infill project for a neglected area of Bath, England, this townhouse pulls from the architectural heritage of Bath and provides an adaptable plan for its occupants. While the standard model features three floors and four bedrooms, the third floor can be easily reconfigured into a separate apartment. Combined with the carriage house flat in the backyard, these two spaces create a long-lasting home that can adapt to the occupants' changing needs.

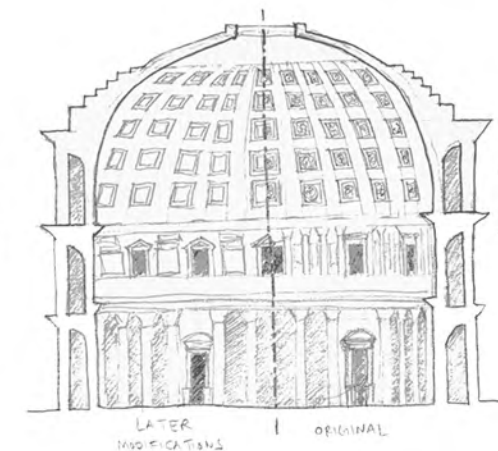
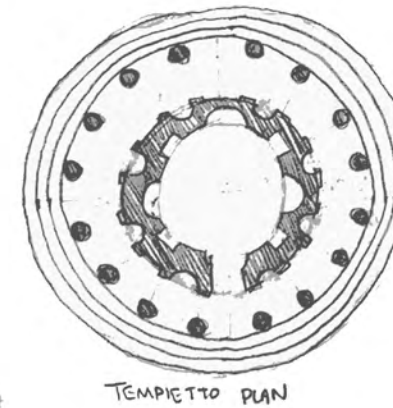
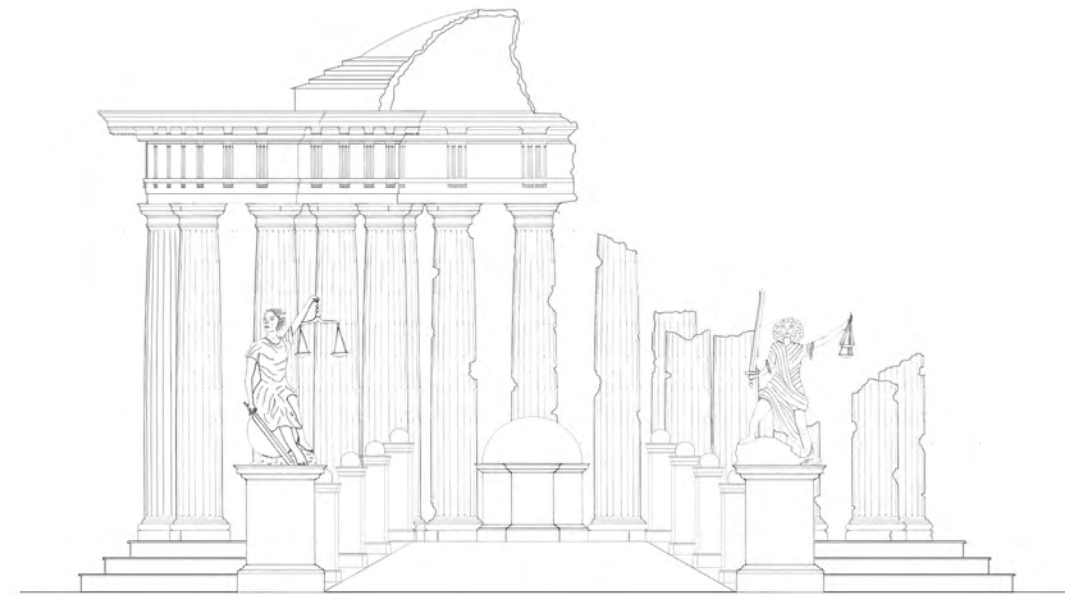


FLAT RECONFIGURATION

SECOND FLOOR

THIRD FLOOR

GROUND FLOOR



- * COFFERS - ORIGINALLY HEAVY DELETED, LATER STRIPPED BARE
- * ATTIC STORY - ORIGINALLY HAD MORE MODIFICATIONS, SHOWING A SIGNIFICANT RELATIONSHIP BETWEEN THE BRIDGE VOID SYSTEM OF THE HEAVY LEVEL

A Monument to Justice

NOTRE DAME, INDIANA
 FALL 2020

When tasked with designing a monument to justice on Notre Dame's campus, I wanted to highlight the power of both justice and injustice. Depending on the path taken, the monument will either fall apart or build itself back up as one progresses through it. Using the visual power of ruins, this progression symbolizes the individual's ability to contribute either positively or negatively to justice, depending on the choices they make.